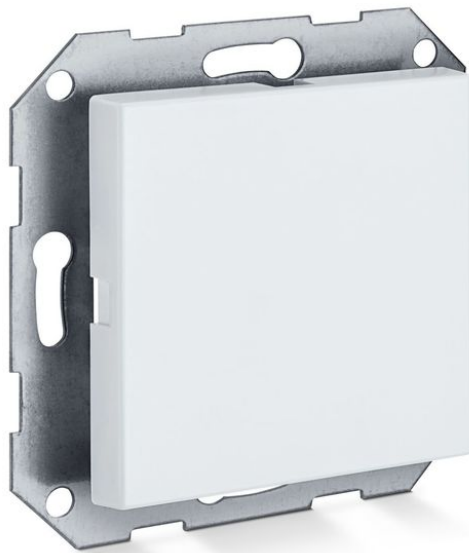


Product data sheet

Dummy cover with supporting ring, Gira E2 *



Flush-mounted frame for the installation of flush-mounted components in GIRA E2 design

AREAS OF APPLICATION

→ For the safe and attractive installation of flush-mounted components

Dummy cover with supporting ring, Gira E2 *



PRODUCT FEATURES

→ Can be combined with various GEZE products such as door control units, switches, push buttons and terminals

TECHNICAL DATA

Productname	Dummy cover with supporting ring, Gira E2 *
Width	55 mm
Type of installation	Surface-mounted installation

VARIANTS / ORDER INFO

Designation	Ident-No.	Colour	Dimensions	Type of installation
Dummy cover with supporting ring, Gira E2 *	142492	anthracite	55 x 55 mm	Surface-mounted installation
Dummy cover with supporting ring, Gira E2 *	093997	pure white matt	55 x 55 mm	Surface-mounted installation

* The products designated above may vary in form, type, characteristics, function, or availability depending on the country. Please get in touch with your GEZE contact person if you have any questions.